

BINDER

MecaTec[®]
Drive Made in Germany

Maximum **POWER**
for your pool cover



MecaTec –
Powerful drive systems for
pool covers

The Experts in powerful and durable **DRIVESYSTEMS**

BINDER GmbH & Co. KG has made a name for itself with its powerful tubular drive systems for pool covers, which are marketed under the MecaTec brand. Since 2003 we have been designing and manufacturing drive systems for operation both

above and below the waterline, as well as the appropriate control systems. The drive systems' high efficiency and graded power levels mean that energy-efficient operation is guaranteed.



MTX - ABOVE WATERLINE DRIVE SYSTEMS

MTI - UNDERWATER DRIVE SYSTEMS



MTSI – SHAFT MOTORS

The **IDEAL MOTOR** for Your pool cover

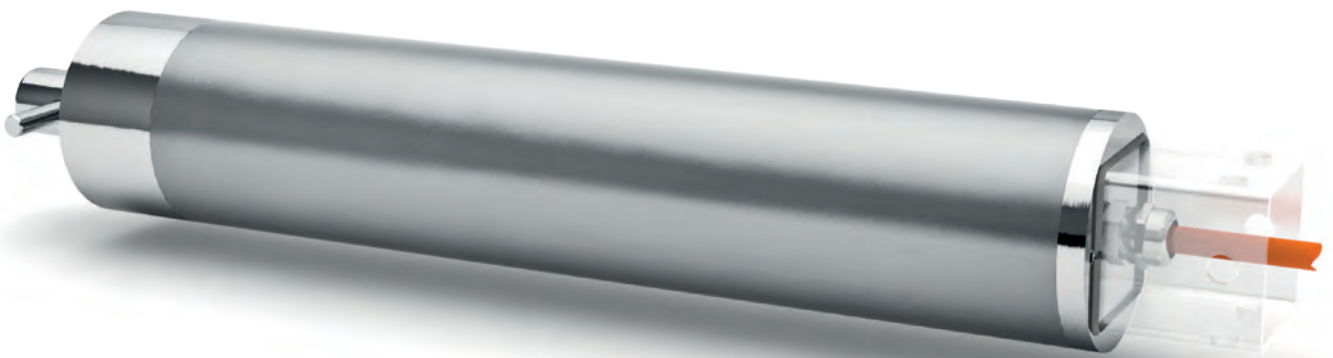
We have specialised in the production of drive systems for pool covers for many years. As a manufacturer of pool covers, you benefit from our extensive know-how and flexibility.

We also offer individually produced drives that fit your cover exactly. You can choose from a wide range of torques between 120 and 1000 Nm.

[We will be happy to provide you with a free quotation.](#)

Underwater drive systems

Compact, watertight and **ADAPTABLE**



MTI

Our systems are nitrogen-filled and thus absolutely watertight. Together with the winding shaft, the motor forms a unit that, together with the slats, can be inconspicuously installed in a roller shutter shaft below the waterline.

BINDER underwater drive systems are made of high-quality stainless steel and meet the criteria of IP Code IP68, relevant to the swimming pool sector.

MTI-Drive system features:

- Highly efficient
- Variable flange diameter
- 24 V DC motor
- Magnetic encoder on motor shaft
- Very quiet operation
- Simple to stop at precisely the right point
- No unwanted movement once motor has stopped
- Underwater drive system can be installed at depths of up to 3 metres
- Two sealing rings on the drive shaft
- Simple operation with the MecaTec control system
- Stainless steel housing (1.4571 or 1.4404)*
- Stainless steel drive shaft (1.4571 or 1.4404)*

* materials & housing according to recognized DIN (status 2024: DIN EN 10217-7)

Since each pool cover is different, we produce six versions of our MTI tubular motor for underwater drive systems with outputs of 133 to 260 W and rated torques of 150 to 1000 Nm.

The drives have a gearbox produced in-house and can be used permanently under water. They are characterised by narrow housings and are suitable for all types of pools.

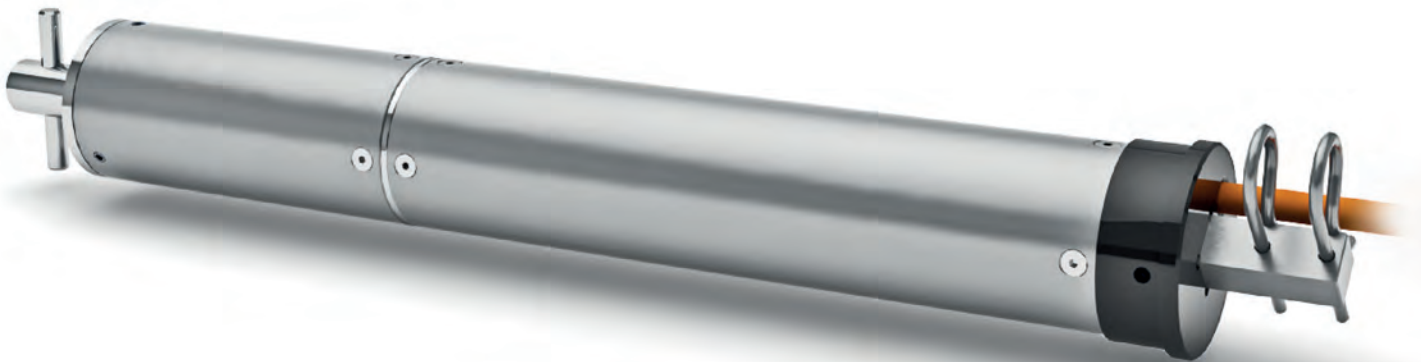
Type	MTI* 150	MTI* 250	MTI* 450	MTI* 600	MTI* 750	MTI* 1000
Diameter [mm]	76,1	90	130	130	204	204
Power supply [V]	24	24	24	24	24	24
Load torque [Nm]	150	250	450	600	750	1000
Load speed [min ⁻¹]	4	3	2,2	2	1,2	1
Load current [A]	5,54	6,9	8,8	13,5	8,2	10,8
Load power rating [W]	135	170	210	325	200	260
Operating mode	S2 (10 min)	S2 (10 min)	S2 (10 min)	S2 (10 min)	S2 (10 min)	S2 (10 min)
IP code	IP68	IP68	IP68	IP68	IP68	IP68

* The drive systems listed are standard models. Solutions may be tailored to individual customer needs. Technical illustrations available on request.



Above-waterline drive systems

ROBUST and powerful



MTX

Are you looking for a powerful, high-quality drive system for your above-waterline pool cover? Then our above-waterline drive systems are the right choice. These motors are available in two versions with outputs of 87 or 108 watts and rated torques

of 120 and 150 Nm respectively. A magnetic encoder on the motor shaft allows the mechanism to be stopped at precisely the right point, with absolutely no unwanted movement.

MTX-Drive system features:

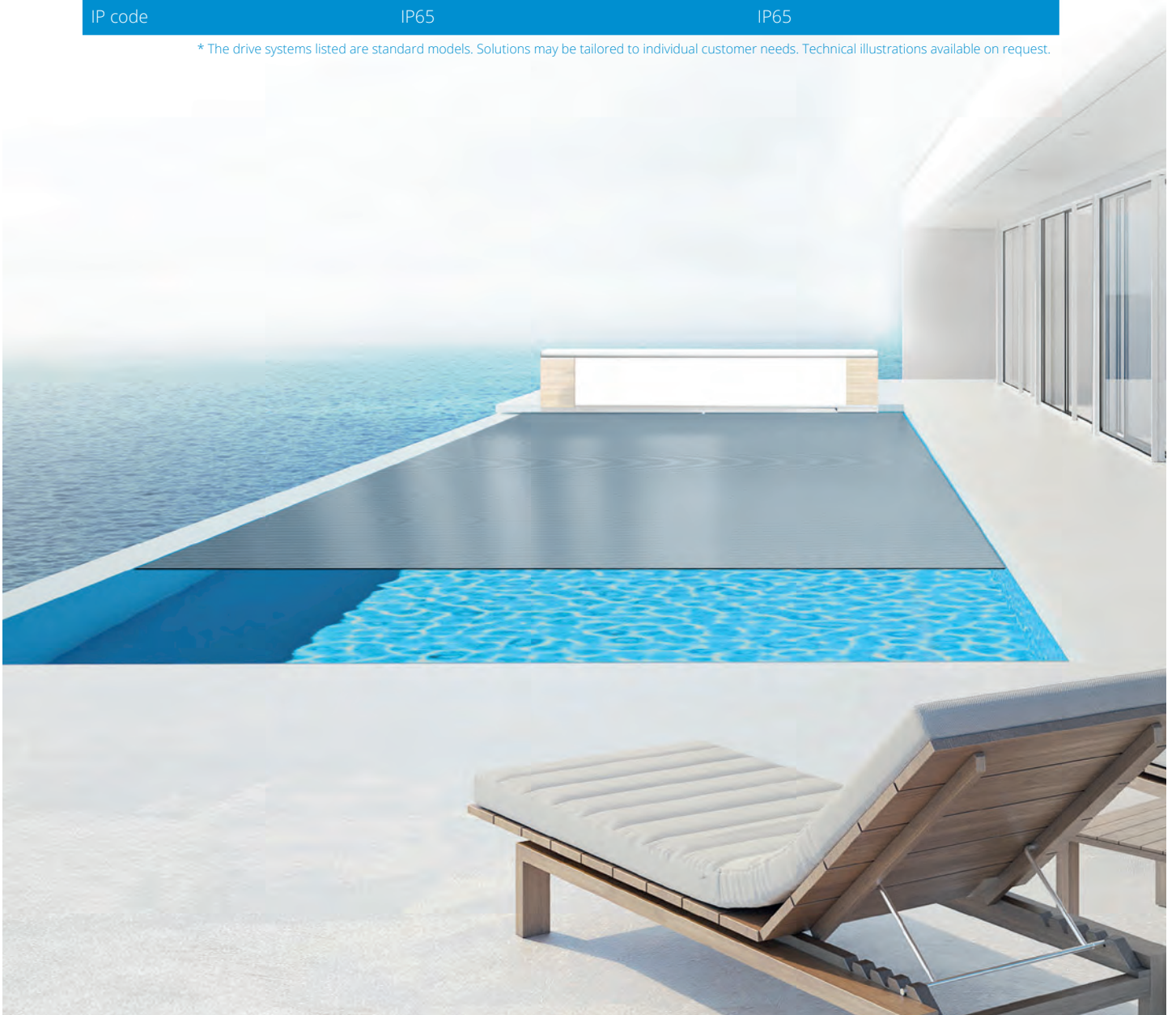
- Highly efficient
- Variable flange diameter
- 24 V DC motor
- Magnetic encoder on motor shaft
- Slim construction
- Very quiet operation
- Precise control of stopping point
- No unwanted movement once motor has stopped
- Simple operation with the MecaTec control system
- Corrosion-free
- IP Code IP65

Our drive systems for mounting above the waterline are manufactured in two versions with maximum torques of 120 and 150 Nm respectively.

They have a galvanised steel construction and meet the criteria of IP Code IP65.

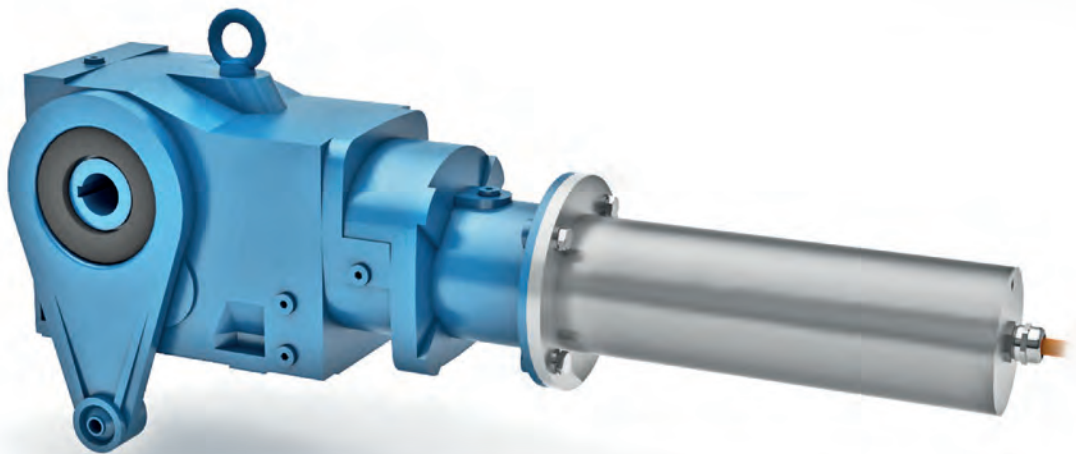
Type	MTX* 120	MTX* 150
Diameter [mm]	52	52
Power supply [V]	24	24
Load torque [Nm]	120	150
Load speed [min ⁻¹]	4,2	4
Load current [A]	5	6
Load power rating [W]	120	145
Operating mode	S2 (10 min)	S2 (10 min)
IP code	IP65	IP65

* The drive systems listed are standard models. Solutions may be tailored to individual customer needs. Technical illustrations available on request.



Shaft motors

Completely watertight even when **SUBMERGED**



MTSI

Normal block motors cannot be used in occasionally water filled shafts. Our shaft motors can: Like our underwater drive systems, they are nitrogen-filled and are thus completely watertight. Hence, they stay operational during a temporary flooding.

Our shaft motors run under water for 35 minutes at most (pressure of 0.5 bar). The compact cast-iron gearbox is coated with a protective layer of waterproof paint. Our shaft motors meet the criteria of IP Code IP67.

MTSI-Drive system features:

- Highly efficient
- Precise control of stopping point
- No unwanted movement once motor has stopped
- Hollow shaft with a diameter of 30 mm
- For above-waterline and underwater covers
- 24 V DC motor with permanent magnet
- Industrial-grade gearbox housing (with 3 layers of protective coating)
- Very quiet operation
- Simple to operate with the MecaTec control system
- Suitable for all types of pool
- Stainless steel housing (1.4301)*
- Stainless steel drive shaft (1.4301)*
- IP Code IP67

* materials & housing according to recognized DIN (status 2024: DIN EN 10217-7)

Our shaft drives are powerful and durable because they feature a patented water stop. We supply the MTSI motors in three versions with rated outputs of

239, 245 and 317 watts as well as torques of 300, 450 and 600 Nm.

Type	MTSI* 300	MTSI* 450	MTSI* 600
Diameter [mm]	90	90	90
Power supply [V]	24	24	24
Load torque [Nm]	300	450	600
Load speed [min ⁻¹]	3,5	3,3	3
Load current [A]	9,93	10,2	13,2
Load power rating [W]	240	245	320
Operating mode	S2 (10 min)	S2 (10 min)	S2 (10 min)
IP code	IP67 (0,5 bar – 35 min)	IP67 (0,5 bar – 35 min)	IP67 (0,5 bar – 35 min)

* The drive systems listed are standard models. Solutions may be tailored to individual customer needs. Technical illustrations available on request.



Our convenient above-ground drive

The **PLUG-AND-PLAY** motor

Elegant, efficient and powerful:

Our MecaTec above-ground drive of the latest generation is unique in every respect. Pool builders save pre-

cious time thanks to the extremely simple installation.

Pool owners are delighted with the convenient control and the energy savings enabled by the PV function.



EASY TO INSTALL

EASY TO OPERATE



MTXi

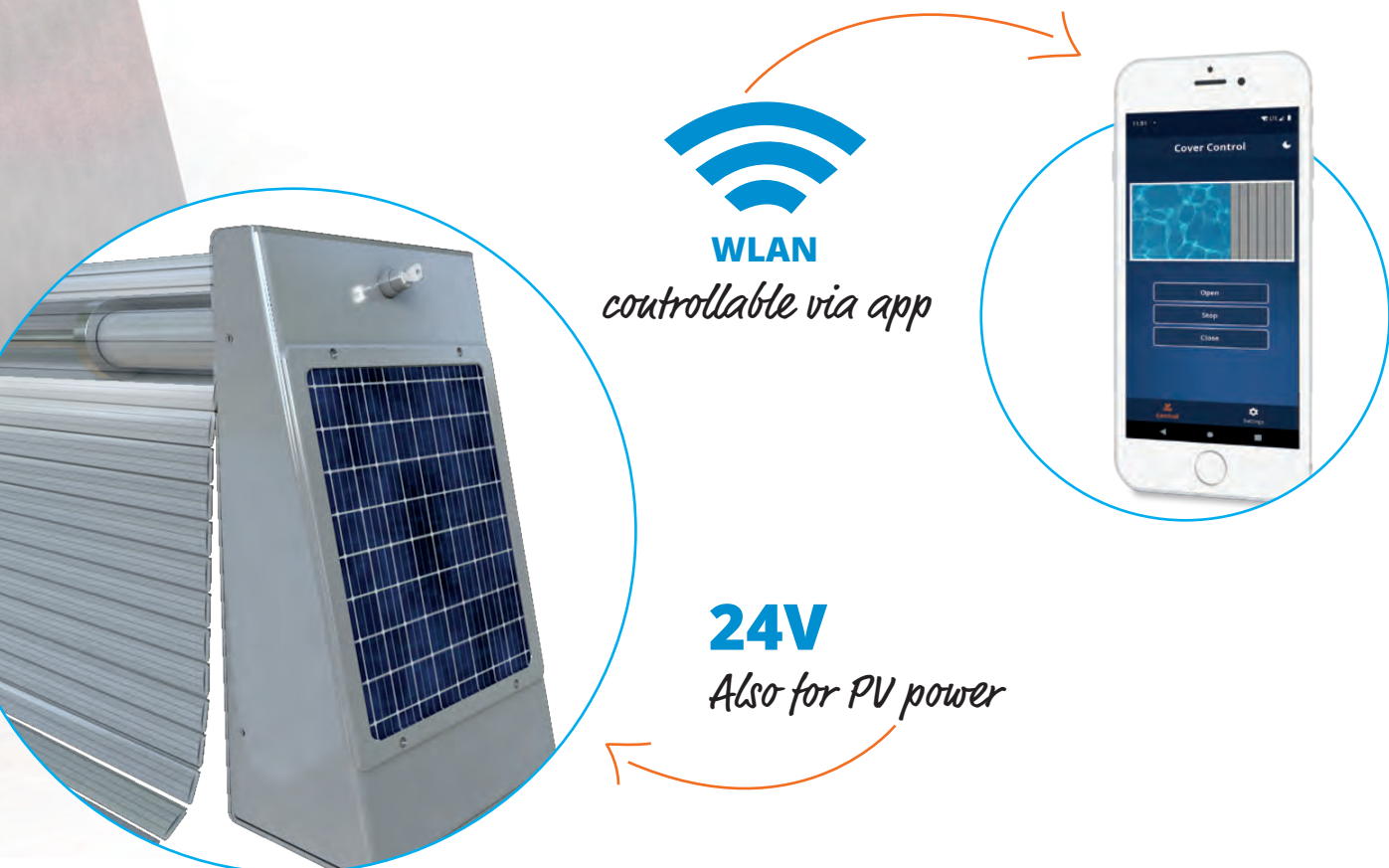
Plug in, load app, **DONE!**

When developing the above-ground drive, we also thought about the environment and your wallet: the above-ground drive can be operated using electricity from a photovoltaic panel.

This is particularly interesting for manufacturers of pool covers who have integrated this function into their products.

Type	MTXi* 120	MTXi* 150
Diameter [mm]	52	52
Power supply [V]	24	24
Load torque [Nm]	120	150
Load speed [min ⁻¹]	4,2	4
Load current [A]	5	6
Load power rating [W]	120	145
Operating mode	S2 (10 min)	S2 (10 min)
IP code	IP65	IP65

* The drive systems listed are standard models. Solutions may be tailored to individual customer needs. Technical illustrations available on request.



MTC-Control system

THE PERFECT ADDITION TO A **SMART HOME**



MTC



With the MTC control system, all our pool cover drive systems can be operated. The control system allows the exact positioning of the cover and can be very easily adapted by the dealer to fit the respective surrounding conditions. It is available in six different versions with

outputs between 144 and 432 W and with two different control housings. The MTC 250 has a transparent cover, while the MTC450 has a housing with a viewing window. All versions are compatible with smart home systems.

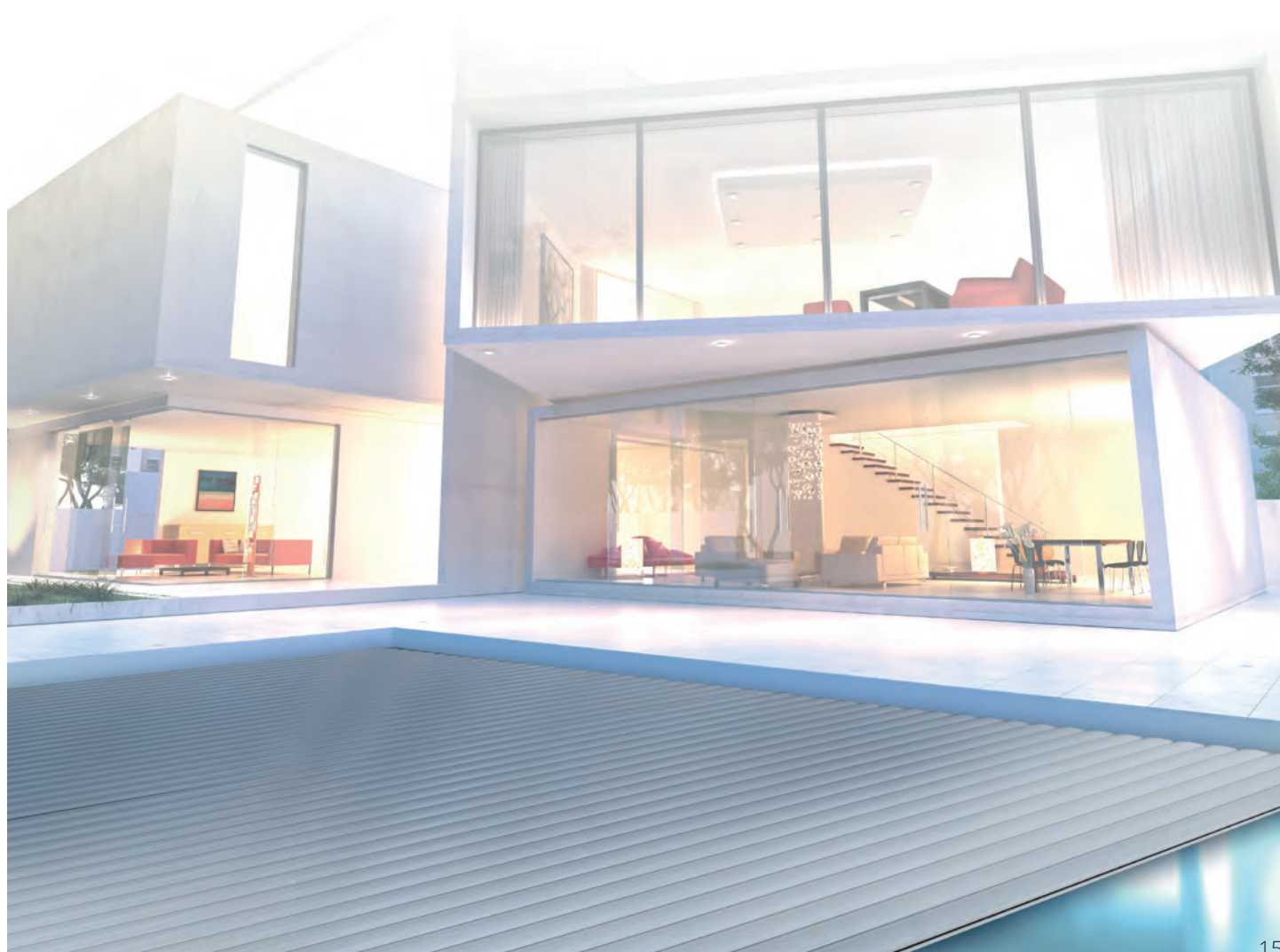
MTC-control system features:

- Highly efficient
- Pool cover can be positioned precisely
- No unwanted movement once motor has stopped
- Smart home compatible
- Very reliable
- Simple to operate
- Custom modes
- Idle output only 2 W

Our MTC controller for pool cover drives is highly efficient, easy to operate and can be individually adapted.

Type	MTC* 150	MTC* 250	MTC* 450	MTC* 600	MTC* 750	MTC* 1000
Power supply [V]	230	230	230	230	230	230
Output voltage [V]	24	24	24	24	24	24
Load current [A]	6	9	10	14	16	18
Load power rating [W]	145	220	240	360	385	435
Operating mode	S2 (12 min)	S2 (12 min)	S2 (12 min)	S2 (12 min)	S2 (12 min)	S2 (12 min)
IP code	IP54	IP54	IP54	IP54	IP54	IP54

* The drive systems listed are standard models. Solutions may be tailored to individual customer needs. Technical illustrations available on request.



DRIVE SYSTEMS

FOR POOL COVER



MecaTec[®]
Drive Made In Germany



BINDER

BINDER GMBH & CO. KG

Eike-Kerstein-Straße 4, 31789 Hameln | Germany

Fon +49 5151 96266-0 | Fax +49 5151 96266-49

Mail info@binder24.com

www.binder24.com

